



## TOP

### Bombay

**SIZE:** -a) 36 1/4" -b) 40 1/8" -c) 43 1/4", finished bust measurement.

**UK Sizes:** -a) 8-10 -b) 12-14 -c) 16-18.

**Garment in photograph corresponds to size: -a) 8-10**

#### MATERIALS

**BOMBAY:** -a) 3 -b) 3 -c) 3 balls color 2018

**Knitting needles:** size 6 (4 metric)

#### Stitches:

*Garter st* (see Basic stitches)

*Pattern st* (see graph A)

#### GAUGE

**Take time to check gauge.**

Measurements are taken after gently blocking swatch.

Using size 6 needles, in *Pattern st*:

20 sts and 34 rows = 4x4".

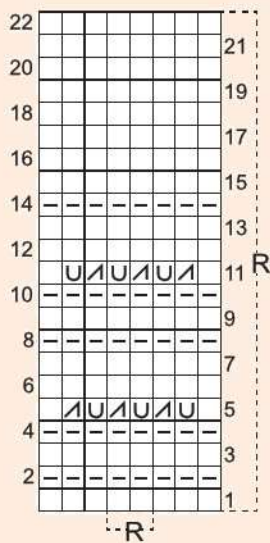
#### INSTRUCTIONS

**IMPORTANT!!!** Before starting carefully read page 3.

- (1) **Back:** cast on the designated sts. Work in *Garter st*.
- (2) When work measures 3/4" (2 cm) continue in *Pattern st* following graph A.
- (3) **Armholes:** When work measures 13 3/8" (34 cm) at both edges **bind off (cast off)** the designated sts, at the beginning of each row.
- (4) When work measures -a) 4" (10 cm) -b) 4 3/8" (11 cm) -c) 4 3/4" (12 cm) from the beginning of armholes and coinciding with the end of the *Pattern st*, continue to work in *Garter st*.
- (5) **Neckline:** When work measures -a) 4 3/4" (12 cm) -b) 5 1/8" (13 cm) -c) 5 1/2" (14 cm) from the beginning of armholes **bind off (cast off)** the designated center sts and continue to work each half separately.

**Graph A**

- R Repeat
- K1
- P1
- U 1 YO
- / K2 tog



**(6) Strap:** When work measures **-a) 7 1/2" (19 cm)**  
**-b) 7 7/8" (20 cm)** **-c) 8 1/4" (21 cm)** from the  
beginning of armholes **bind off (cast off)** all sts.  
Finish other half in the same way.

**Front:** Work same as back.

**FINISHING (MAKING UP)**

All seams are **sewn** using *Side seam technique* (see Basic stitches).

**Sew** side seams and straps.

■ **HOW TO FOLLOW THE WORK:** In order to knit the model correctly you must follow steps 1 to 6 (indicated on the pattern) and as explained step by step in the instructions.

**Abbreviations**

The information in black is used for all sizes

- cm. = centimeters
- p. = stitches
- = bind (cast off) stitches
- = = stitches that you have on needle
- ∩ = sew

**BACK AND FRONT**

