

ENGLISH

SIZE: -a) 4 -b) 6 -c) 8 -d) 10 -e) 12 years

MATERIALS

BOMBAY: -a) 3 -b) 4 -c) 4 -d) 5 -e) 5 balls color no. 2013

Crochet Hook	Stitches
Size D3 (U.S.)/ (3 metric)	<ul style="list-style-type: none"> • Crochet Chain (See Basic Instructions) • Single Crochet (See Basic Instructions) • Double Triple Crochet (See Basic Instructions) • Openwork Pattern St (See Graph A) • Knotting (See Graph B)

GAUGE

In *Openwork Pattern St*: 23 sts and 10 rows = 4x4"

In *Single Crochet*: 23 sts and 26 rows = 4x4"

BACK

Chain -a) 77 -b) 83 -c) 89 -d) 98 -e) 104 and then work *Openwork Pattern St*, **decreasing** at each edge on every 4th row: -a) 1 st 4 times -b) 1 st 5 times -c) 1 st 5 times -d) 1 st 7 times -e) 1 st 7 times as follows: on right side of work at beg of row: ch 5 or ch 1, as corresponds, and skip 1 st on base; at left edge at end of row, work to last 2 sts: work 2 sts closed tog [-a) 69 sts -b) 73 sts -c) 79 sts -d) 84 sts -e) 90 sts rem].

After working -a) 24 rows -b) 24 rows -c) 28 rows -d) 28 rows -e) 32 rows in *Openwork Pattern St*, work *Single Crochet*.

Armholes: When back measures -a) 9" (23 cm) -b) 10 1/4" (26 cm) -c) 11 3/8" (29 cm) -d) 12 5/8" (32 cm) -e) 13 3/4" (35 cm), at end of each row at each edge **do not work**: 3 sts 1 time, 2 sts 1 time, 1 st 1 time [-a) 57 sts -b) 61 sts -c) 67 sts -d) 72 sts -e) 78 sts rem].

When back measures -a) 11" (28 cm) -b) 12 5/8" (32 cm) -c) 14 1/8" (36 cm) -d) 15 3/4" (40 cm) -e) 17 3/8" (44 cm), work 4 rows in *Openwork Pattern St* and then work *Single Crochet*.

Neckline: When back measures -a) 12 5/8" (32 cm) -b) 14 1/8" (36 cm) -c) 15 3/4" (40 cm) -d) 17 3/8" (44 cm) -e) 18 7/8" (48 cm), **do not work center** -a) 11 sts -b) 13 sts -c) 17 sts -d) 20 sts -e) 22 sts and work each side separately; then at end of each wrong side row, **do not work**: 7 sts 1 time, 5 sts 1 time, 2 sts 1 time.

Shoulder: When back measures -a) 14 1/8" (36 cm) -b) 15 3/4" (40 cm) -c) 17 3/8" (44 cm) -d) 18 7/8" (48 cm) -e) 20 1/2" (52 cm), **cut yarn, fasten off** and weave in ends. Work other side the same, reversing shaping.

FRONT

Work same as back.

SLEEVES

Chain -a) 44 -b) 47 -c) 50 -d) 50 -e) 53 and then work *Openwork Pattern St*, **increasing** at each edge on every -a) 12th row: 1 st 1 time -b) 10th row: 1 st 2 times -c) 8th row: 1 st 3 times -d) 6th row: 1 st 5 times -e) 6th row: 1 st 6 times as follows: on right side of work at beg of row: ch 1 or ch 5, as corresponds, and then work 1 sc or 1 dtrc in 1st st on base (= 2 sts worked in the same st); at left edge at end of row, work to last st: work 2 sts in same st [-a) 46 sts -b) 51 sts -c) 56 sts -d) 60 sts -e) 65 sts].

After working -a) 24 rows -b) 28 rows -c) 28 rows -d) 32 rows -e) 36 rows in *Openwork Pattern St*, work *Single Crochet*.

Armhole: When sleeve measures -a) 10 1/4" (26 cm) -b) 11 3/8" (29 cm) -c) 12 5/8" (32 cm) -d) 13 3/4" (35 cm) -e) 15" (38 cm), at each edge at end of every row, **do not work**:

-a) 3 sts 1 time, 2 sts 2 times, 1 st 8 times, 2 sts 2 times [8 sts rem], then **cut yarn, fasten off** and weave in ends.

-b) 3 sts 1 time, 2 sts 2 times, 1 st 8 times, 2 sts 3 times [9 sts rem], then **cut yarn, fasten off** and weave in ends.

-c) 3 sts 1 time, 2 sts 2 times, 1 st 8 times, 2 sts 4 times [10 sts rem], then **cut yarn, fasten off** and weave in ends.

-d) 3 sts 1 time, 2 sts 2 times, 1 st 9 times, 2 sts 4 times [12 sts rem], then **cut yarn, fasten off** and weave in ends.

-e) 3 sts 1 time, 2 sts 2 times, 1 st 10 times, 2 sts 4 times [15 sts rem], then **cut yarn, fasten off** and weave in ends.

FINISHING (MAKING UP)

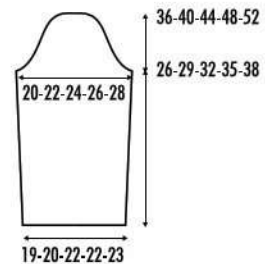
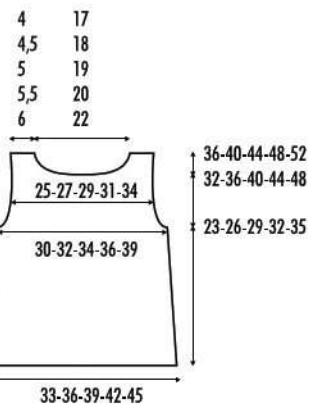
Knot the *Double Triple Crochet* sts in groups of 3 over the *Openwork Pattern St* on front, back and sleeves as shown on Graph B.

With right sides of back and front facing, **sew** shoulder seams.

Matching center of sleeve with shoulder seam, **sew** in cap of sleeve. Work both sleeves the same.

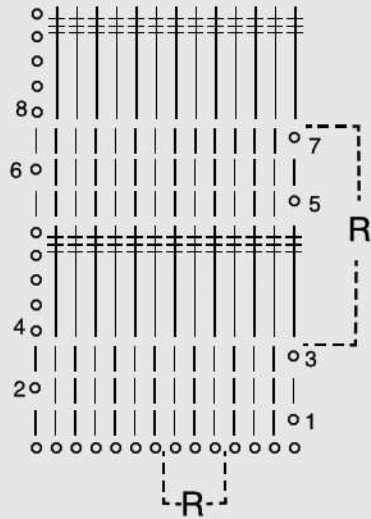
Lastly, **sew** side and underarm seams.

Work -a) 80 sts -b) 88 sts -c) 96 sts -d) 104 sts -e) 112 sts in *Single Crochet* around neckline; work 1 row then **cut yarn, fasten off** and weave in ends.



Graph A

- R Repeat
- chain 1
- | single crochet
- ≡≡≡ double triple crochet



Graph B

